



# **Rsam Platform**

Installation Guide (Manual Method)

Version: 9.2 | September 2019

© 2019 Relational Security Corporation dba Galvanize. All rights reserved

[www.wegalvanize.com](http://www.wegalvanize.com)

# Contents

<b>Initial Setup</b> .....	<b>3</b>
Pre-Installation Requirements.....	3
Setting up Role Services on Windows 2008/2012 Server.....	3
Setting up Request Filtering .....	4
Enabling Microsoft Message Queuing for Syslog.....	5
Enabling Message Queuing on Windows Server.....	5
Enabling Message Queuing for Windows 7.....	6
<b>Installing and Setting up Your Rsam Software</b> .....	<b>7</b>
Copying Web Interface files.....	7
Configuring LDAP Server.....	9
Setting up Your SQL Data Source.....	11
Setting up Your IIS Web Server .....	12
Setting up Rsam Application Pool.....	12
Setting up Rsam Reporting Application Pool .....	13
Setting up Rsam Virtual Directory for Rsam Main Web .....	13
Setting up Permissions for the Temp folder.....	14
Setting up File Security in the RequiresAuthentication.xml file .....	15
Setting up Rsam Virtual Directory for Web Reporting.....	16
Setting up Rsam Virtual Directory for Web Admin.....	17
Set Permissions for the SSRS_Temp folder .....	17
Setting up Rsam Virtual Directory for Findings .....	17
Setting up Permissions for the Temp folder.....	17
Setting up Rsam Virtual Directory for SSO .....	18
Configuring Directory Security.....	18
Setting up Rsam Virtual Directory for Permissions.....	18
Setting up Rsam Scheduler Service.....	19
Enabling Assessment Questionnaire .....	19
Importing the migration file.....	19
Running Store Procedure and Script files.....	20
<b>Install Microsoft Access Database Engine</b> .....	<b>21</b>
<b>Reports</b> .....	<b>22</b>
Install Crystal Reports 2013 .....	22
Enabling Rapid Reports.....	23
<b>Configurations in Rsam</b> .....	<b>24</b>
Rsam Option for Data Import .....	24
Setting up Rsam Web URLs .....	24

# Initial Setup

---

This section explains the following topics:

- [Pre-Installation Requirements](#)
- [Setting up Role Services on Windows 2008/2012 Server](#)
- [Setting up Request Filtering](#)
- [Enabling Microsoft Message Queuing for Syslog](#)

## Pre-Installation Requirements

Before installing the RSAM Web Interface on a server, make sure that the server meets the minimum requirements for Rsam, and that the following tasks have been completed:

- IIS v7.0 or higher has been installed on Windows Server 2008/R2, Windows Server 2012/R2, or Windows 7.
- Microsoft .NET 4.5.2 Framework is installed.
- Crystal Reports 2013 Runtime Files have been installed for Web Reporting. A license key is not needed. Click **Next** button through the pages to finish.
- Latest Windows and IIS Security patches / updates are installed.
- A SQL server hosting the Rsam database is installed and configured.
- Microsoft Access Database engine 2010 or higher is installed.

**Note:** It is recommended to use HTTPS protocol for Rsam installation for security purposes.

## Setting up Role Services on Windows 2008/2012 Server

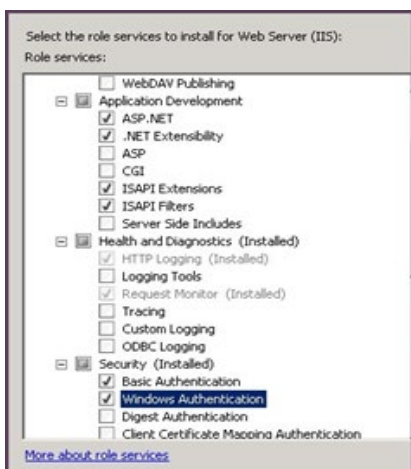
To set up role services on Windows 2008/2012 Server, perform the following steps:

1. Install the required roles by using the **Server Manager** tool.
2. In the navigation pane, expand **Roles**, right-click **Web Server (IIS)** and select **Add Role Services**.
3. Scroll to **Security** section and select the check boxes corresponding to **Basic Authentication** and **Windows Authentication**.

**Note:** Do NOT clear any already existing selections.

4. Scroll to **Application Development** section and make sure that the check boxes corresponding to **ASP.NET**, **.NET Extensibility**, **ISAPI Extensions**, and **ISAPI Filters** are selected.

**Note:** Do NOT clear any already existing selections.

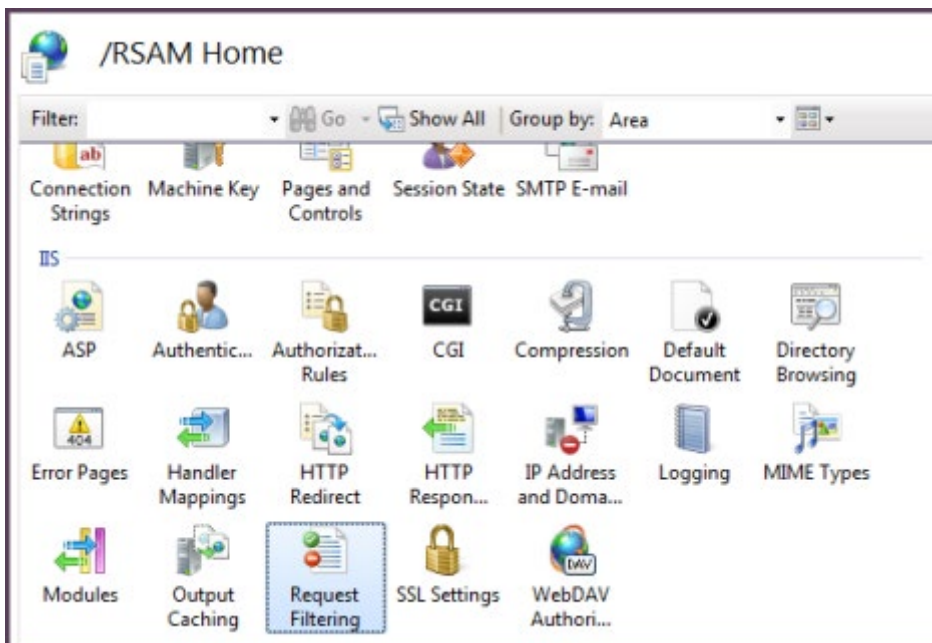


5. In the **Select Role/Services** panel, click **Next**, and then click **Install** on the **Confirm Installations Selections** panel.
6. Click **Close** to exit the Add Role Services wizard.

## Setting up Request Filtering

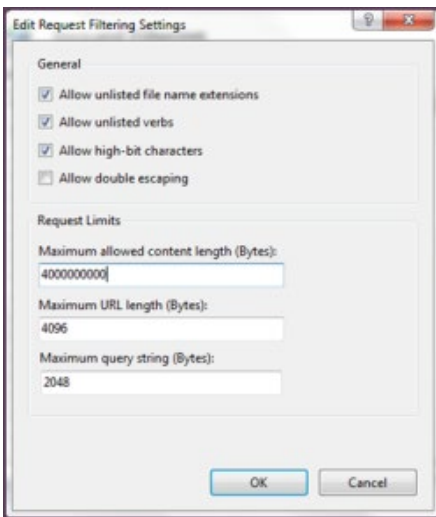
If you plan to import large files on a Win2012/Win2008/IIS7 server, it will require adjusting the **Request Filtering** property of IIS to allow larger files. In some cases, this option may not be available. You can install the package available at <http://www.iis.net/download/AdministrationPack>.

1. In IIS Manager, select the Rsam server.
2. Double-click **Request Filtering**.



3. Click **Edit Feature Settings** on the right panel. The **Edit Request Filtering Settings** dialog box opens.

- Set the value in **Maximum allowed content length (Bytes)** field to **400000000** and click **OK**.



- On the system, navigate to *C:\inetpub\wwwroot\RSAM\_FINDINGS*.
- Open the **web.config** file using a text editor.
- Update the value for **requestLengthDiskThreshold** to **100000** and save the file.

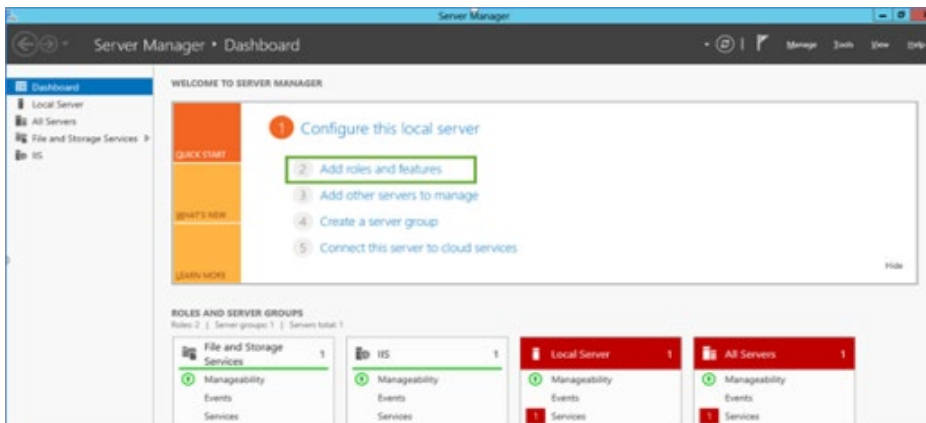
## Enabling Microsoft Message Queuing for Syslog

To enable message queuing, perform one of the following:

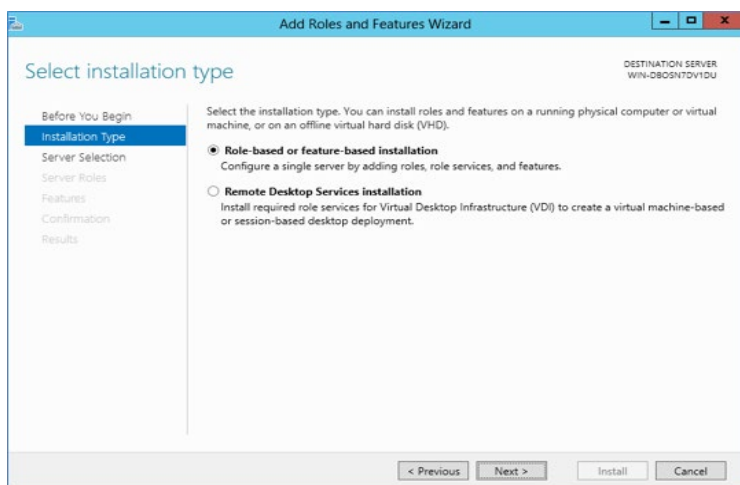
- [Enabling Message Queuing for Windows Server](#)
- [Enabling Message Queuing for Windows 7](#)

## Enabling Message Queuing on Windows Server

- Navigate to **Start > Control Panel > Programs > Turn Windows feature on or off**.
- In the **Server Manager** Dashboard, click **Add roles and features**.



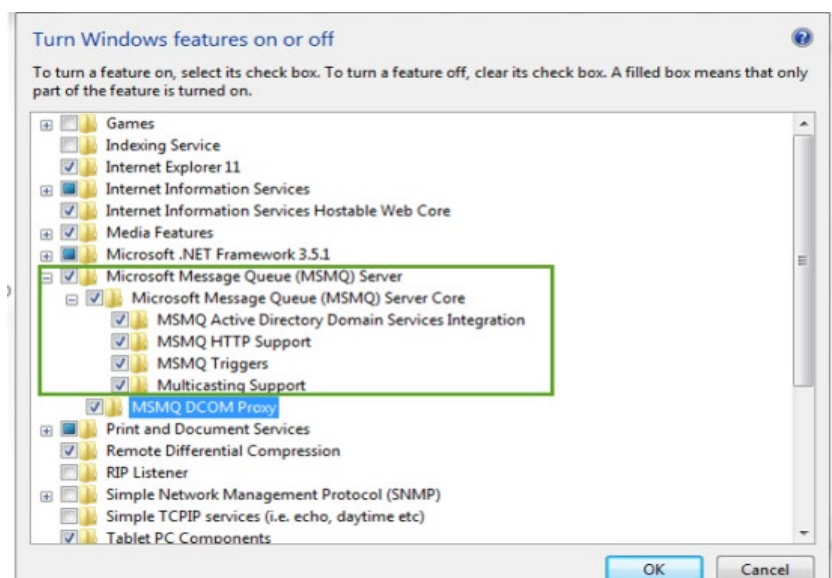
3. In the **Add Roles and Features Wizard**, select the **Installation Type** tab, and select **Role-based or feature-based installation**.



4. Click **Next**.
5. Click **Server Selection** tab and select a server from the **Server Pool** section and click **Next**.
6. Click **Features** tab and in the **Features** section, select the check box corresponding **Message Queuing**. Ensure all the options under **Message Queuing** are enabled.
7. Click **Next**.

## Enabling Message Queuing for Windows 7

1. Navigate to **Start > Control Panel > Programs > Turn Windows feature on or off**.
2. Select the check box corresponding to **Microsoft Message Queue (MSMQ) Server**.



3. Click **OK**.

# Installing and Setting up Your Rsam Software

---

This section explains the following topics:

- [Copying Web Interface files](#)
- [Configuring LDAP Server](#)
- [Setting up Your SQL Data Source](#)
- [Setting up Your IIS Web Server](#)
- [Enabling Assessment Questionnaire](#)

## Copying Web Interface files

This process will copy the required Web Interface files to a directory on your web server and create the data access connections.

### Notes on Upgrading from Previous Rsam Versions

If you have already installed a previous version of Rsam, take a backup and delete all files from the following directories (outlined in step 1 below) with the following exception. Do NOT remove:

- Datasource.ini
- Distweb.dat
- Distldap.dat
- Any other files ending in .dat
- RSAM\_Links.xml (if present)

1. Create directories on your Web Server to hold the Rsam web files. Recommended directory names are as follows:
  - X:\inetpub\wwwroot\RSAM (for the core Rsam Main Web product)
  - X:\inetpub\wwwroot\RSAM\_WEBADMIN (for the Web Administration module)
  - X:\inetpub\wwwroot\RSAM\_REPORTING (for the Web Reporting module)
  - X:\inetpub\wwwroot\RSAM\_FINDINGS (for the Findings module)
  - X:\inetpub\wwwroot\RSAM\_PERMISSIONS (for the Permission assignment feature-set)
  - X:\inetpub\wwwroot\RSAM\_SSO (for the Single Sign-On module)
  - X:\inetpub\wwwroot\RSAM\_API (for the API)
  - X:\inetpub\wwwroot\RSAM\_SCHEDULER\_SERVICE (for the Scheduler feature-set)

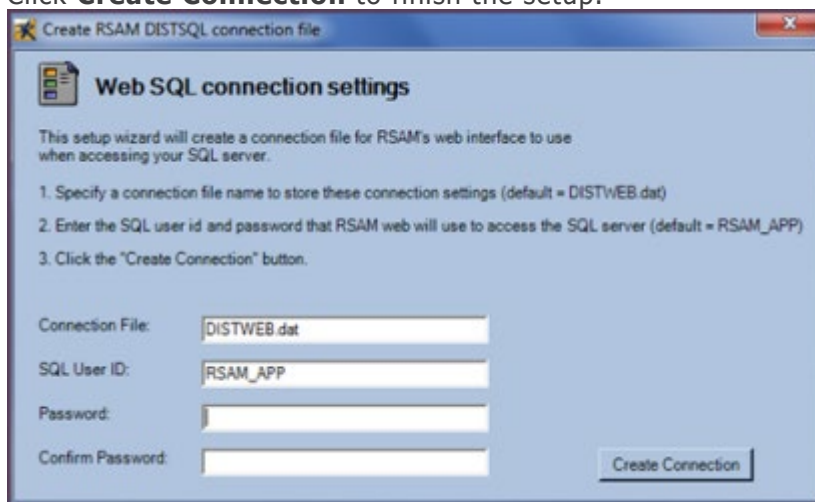
2. Extract the contents of the Rsam zip files into these directories (it is highly recommended that the files be extracted directly into these directories, and not extracted and copied to these directories):
  - RSAM\_WEB\_FULL\_X.zip into the RSAM directory
  - RSAM\_WEBADMIN\_X.zip into the RSAM\_WEBADMIN directory
  - RSAM\_WEB\_REPORTING\_X.zip into the RSAM\_REPORTING directory
  - RSAM\_WEB\_FINDINGS\_X.zip into the RSAM\_FINDINGS directory
  - RSAM\_PERMISSIONS\_X.zip into the RSAM\_PERMISSIONS directory
  - RSAM\_SSO\_X.zip into the RSAM\_SSO directory
  - RSAM\_INSTALL\_API into the RSAM\_API directory
  - RSAM\_SCHEDULER\_SERVICE\_X.zip into the RSAM\_Scheduler\_Service directory

3. Create a **DISTWEB.dat** connection file as follows:

- a. Navigate to the location, *X:\inetpub\wwwroot\RSAM* and launch the application **MAKE\_DISTWEB\_LDAP.exe** (right-click and select **Run as Administrator**, if the web server is Windows Server 2008).
- b. Provide the following information when prompted.

Prompt	Required Information
<b>Connection File</b>	Name of the file to store SQL connection information into (the default of DISTWEB.dat is preferred)
<b>SQL User ID</b>	Name of the SQL user account Rsam Web must use when accessing the SQL Server (default RSAM_APP is preferred)
<b>SQL Password</b>	Password created by you for the <i>RSAM_APP</i> account during the SQL Server setup.

- c. Click **Create Connection** to finish the setup.





4. If you plan to allow users to search the LDAP server when assigning other users to assessments, then create a **DISTLDAP** file as follows:
  - a. Navigate to the location, *X:\inetpub\wwwroot\RSAM* and launch the application **MAKE\_DISTWEB\_LDAP.exe** (right-click and select **Run as Administrator**, if the web server is Windows Server 2008).

- b. Provide the following information when prompted.

Prompt	Required Information
<b>Connection File</b>	Name of the file to store SQL connection information into (the default of DISTLDAP.dat is preferred)
<b>LDAP User ID</b>	Name of the LDAP user account Rsam Web must use when querying the LDAP Server.  <b>Note:</b> Do not use the format <i>DOMAIN\LDAP name</i> . Provide the LDAP name. If that fails, use the fully qualified LDAP name ( <i>CN=...</i> ).
<b>LDAP Password</b>	The password to use when querying the LDAP Server.

- c. Click **Create Connection** to finish the setup.
    - d. Copy the **DISTLDAP.dat** file into **RSAM\_FINDINGS**, **RSAM\_PERMISSIONS**, **RSAM\_WEBADMIN**, **RSAM\_SSO** (optional), and also into the **RSAM\_SCHEDULER** folder.

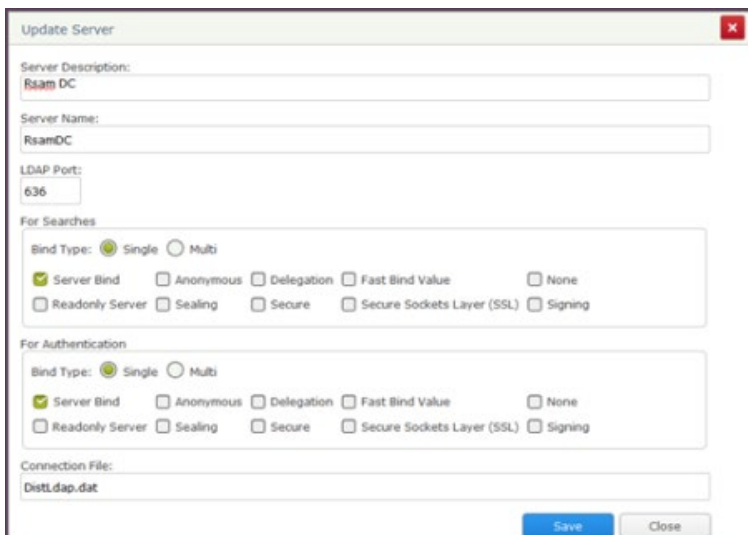
## Configuring LDAP Server

The LDAP User ID should be a service account created by the *LDAP Administrator*. If you have multiple LDAP Domains specified in the Rsam Web Admin 'LDAP Admin - Domain' option, additional DISTLDAP files must be created matching the name defined in the 'LDAP Domain - Server' configuration.

To access the configuration pages, log in to Rsam as an *Administrator* and navigate to **Manage > Administration > Options. LDAP Admin - Server** and **LDAP Admin - Domain** options are available.

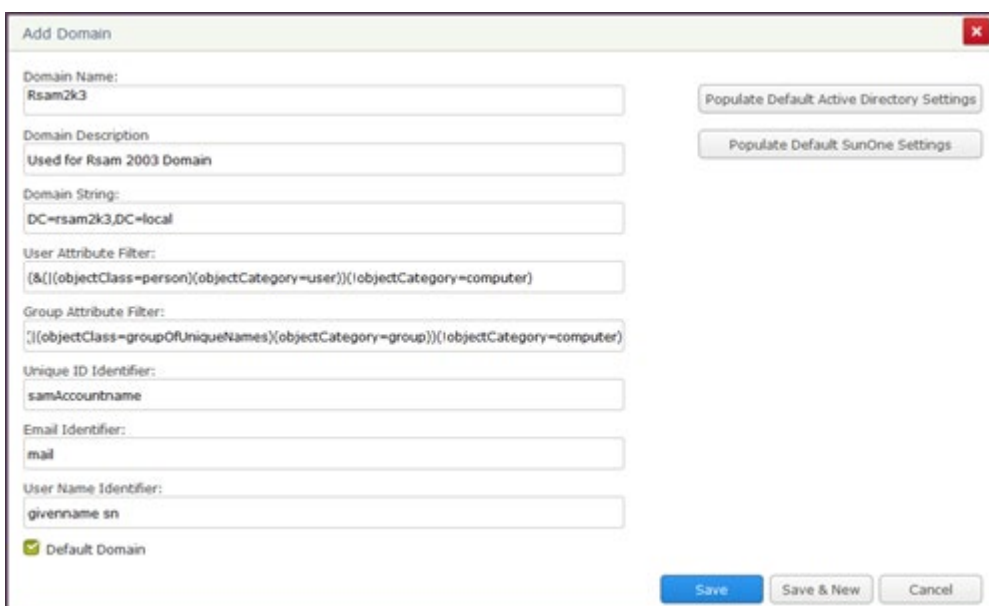
1. LDAP Server configuration:

To configure the DISTLDAP file name, select **LDAP Admin - Server**. If there is more than one LDAP server, click **Add** to add the additional servers.

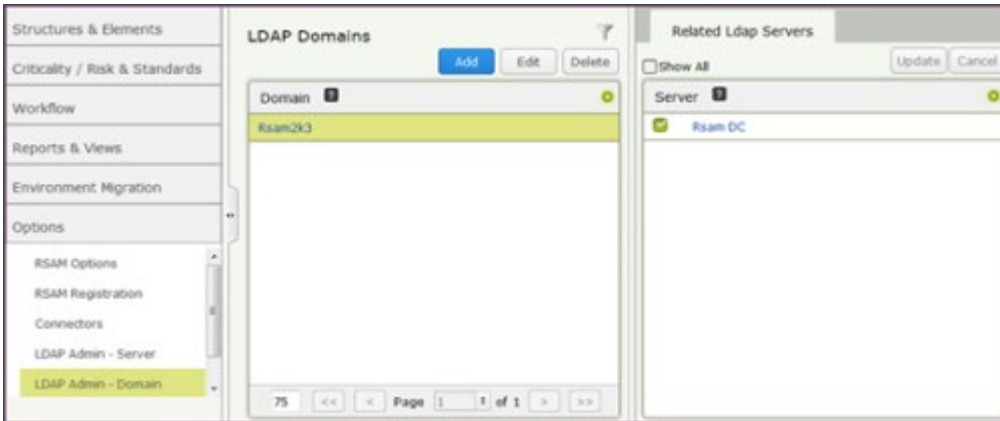


2. LDAP Domain configuration:

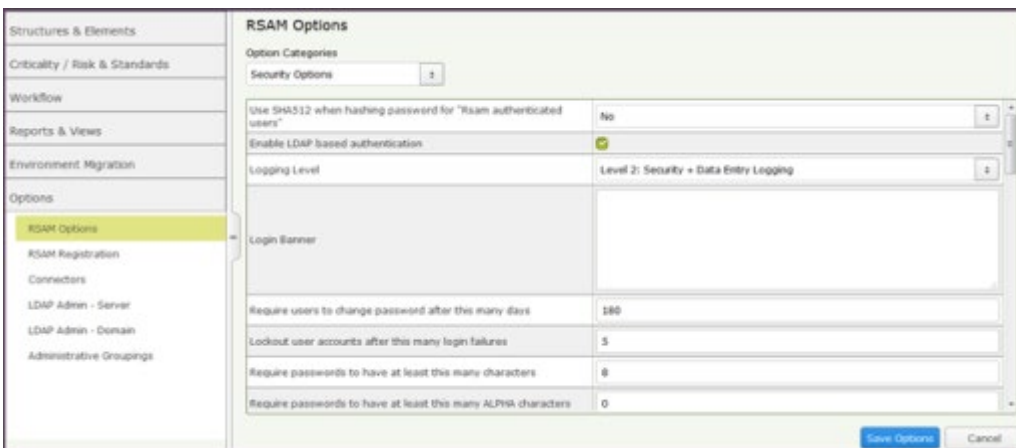
To configure the LDAP domain details, select **LDAP Admin - Domain**. Make sure to enter the **Domain String** in the format as *dc=...,dc=...* or *o=...* (do not enter it like Rsam2k3.local).



3. After configuring the LDAP Servers and domains, you must associate them. From one of the LDAP pages, use the **Related LDAP Domains** or **Related LDAP Servers** panel, establish the association.



- To enable LDAP-based authentication, go to **Manage > Administration > Options > RSAM Options** and select **Security Options** from the **Option Categories** drop down list. Select the check box corresponding to **Enabled LDAP based authentication**.



- Copy the newly created DISTWEB and DISTLDAP files to your other Rsam directories
  - X:\inetpub\wwwroot\RSAM\_REPORTING (for the web reporting module)
  - X:\inetpub\wwwroot\RSAM\_FINDINGS (for the findings module)
  - X:\inetpub\wwwroot\RSAM\_PERMISSIONS (for the permission assignment feature-set)
  - X:\inetpub\wwwroot\RSAM\_WEBADMIN (for the administration feature-set)
  - X:\inetpub\wwwroot\RSAM\_SSO (for the single sign-on module)
  - X:\inetpub\wwwroot\RSAM\_API
  - X:\Program Files\RSAM\_SCHEDULER\_SERVICE (for the Scheduler feature-set)

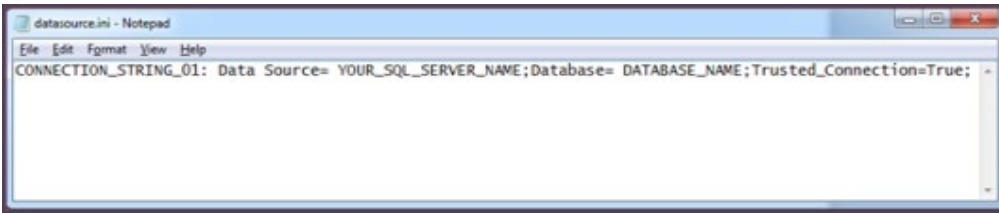
## Setting up Your SQL Data Source

To specify the SQL data source to be used by Rsam application, perform the following steps:

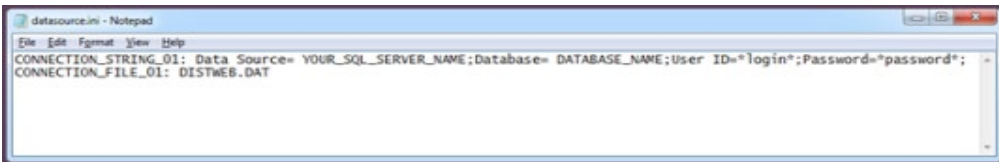
- Use Windows Explorer and navigate to your newly created RSAM directory (usually x:\inetpub\wwwroot\Rsam).
- Double-click the **datasource.ini** file.

3. Locate the entry that starts with **DATABASE\_SOURCE\_01: Data Source=** and type in the **Name** or **IP Address** of the Server hosting the Rsam database.

**For Trusted connection**



**For SQL authentication**



4. **Save** the file and close the edit window.
5. Copy the updated datasource.ini file to your other Rsam directories:
  - X:\inetpub\wwwroot\RSAM\_REPORTING (for the web reporting module)
  - X:\inetpub\wwwroot\RSAM\_FINDINGS (for the findings module)
  - X:\inetpub\wwwroot\RSAM\_PERMISSIONS (for the permission assignment feature-set)
  - X:\inetpub\wwwroot\RSAM\_ADMINISTRATION (for the administration feature-set)
  - X:\inetpub\wwwroot\RSAM\_SSO (for the single sign-on module)
  - X:\inetpub\wwwroot\RSAM\_API
  - X:\Program Files\RSAM\_SCHEDULER\_SERVICE (for the Scheduler feature-set)

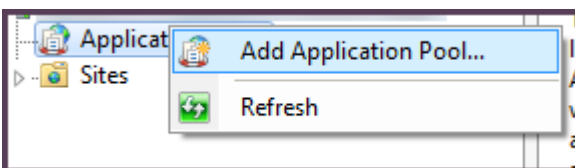
## Setting up Your IIS Web Server

The following steps should be completed to set up your Rsam Web Application on a Windows 2008/R2 /2012/R2 Server.

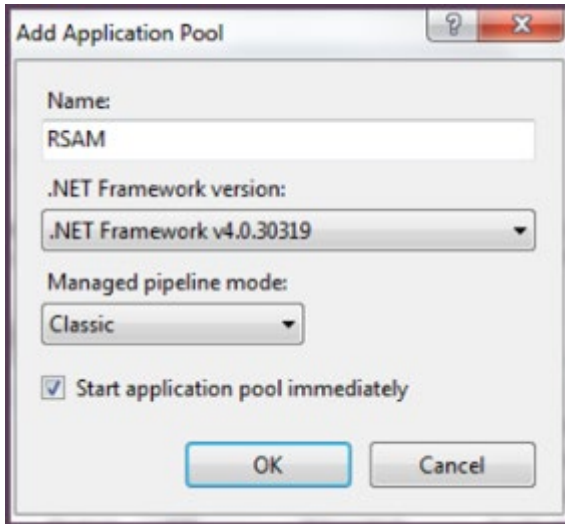
### Setting up Rsam Application Pool

Perform the following steps to setup the Application Pool:

1. Open Internet Information Services Manager (IIS Manager).
2. Expand your server instance, and then right-click **Application Pools** and select **Add Application Pool**.



3. Type **RSAM** in the **Name** field (this will be used with all the Rsam Web component virtual directories except RSAM\_Reporting module).

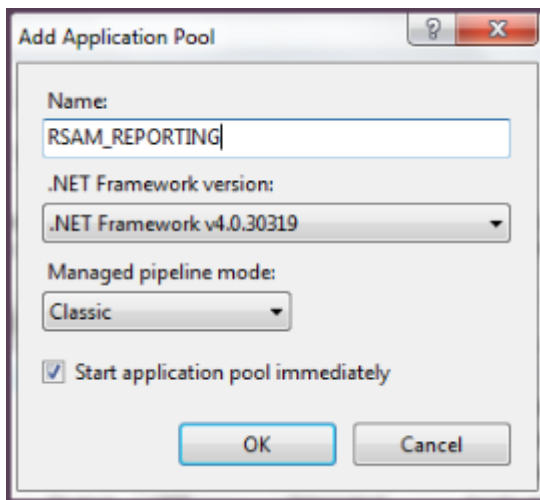


Leave the **.NET Framework version** as **.NET Framework v4.0.xx** and Managed pipeline mode as **Classic**.

4. Click **OK**.

## Setting up Rsam Reporting Application Pool

You can add one more Application Pools by right-clicking **Application Pools** on the left panel and selecting **Add Application Pool**. Set the Name to **RSAM\_Reporting**.

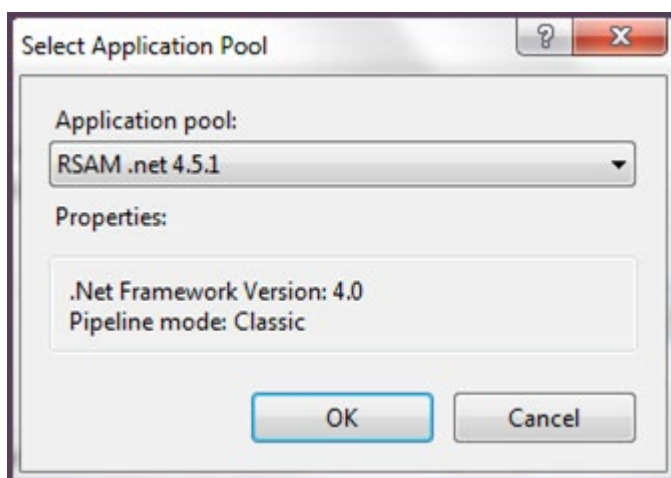
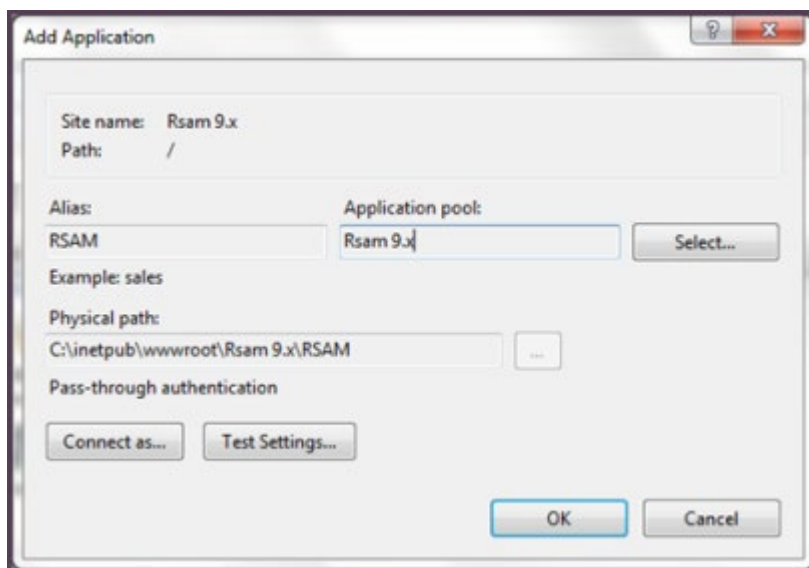


## Setting up Rsam Virtual Directory for Rsam Main Web

To configure the IIS web service, perform the following steps:

1. Open IIS Manager.
2. Expand your server instance and navigate to **Web Sites > Default Web Site**.
3. Create the RSAM virtual directory as follows:

- a. On the left side of the panel, right-click the **RSAM** folder and select **Convert to Application**.
- b. In the **Add Application** dialog box, click **Select** and choose **RSAM**.



## Setting up Permissions for the Temp folder

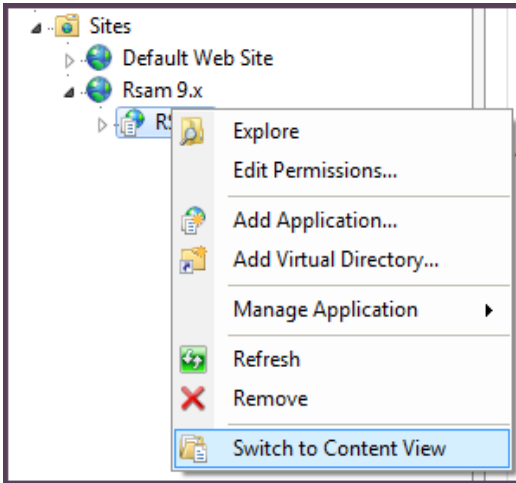
1. Open Window Explorer and navigate to the RSAM Main folder (i.e. x:\inetpub\wwwroot\RSAM).
2. Right-click the **Temp** folder to open the **Properties** dialog box.
3. In the **Security** tab, click **Add**, and then type **servername\Network Service** (where *servername* is the actual name of the server this is installed on) and click **OK**.
4. Highlight **Network Service**, select **Allow for Full Control** and click **OK**.

## Setting up File Security in the RequiresAuthentication.xml file

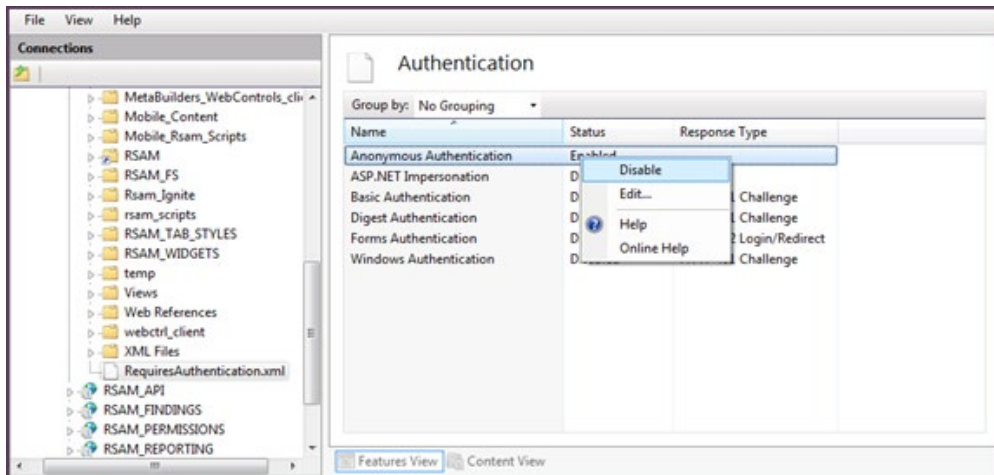
This setup is required for Single Sign-On functionality.

To set up the file security, perform the following steps:

1. In IIS Manager, right-click the RSAM virtual directory and select **Switch to Content View**.



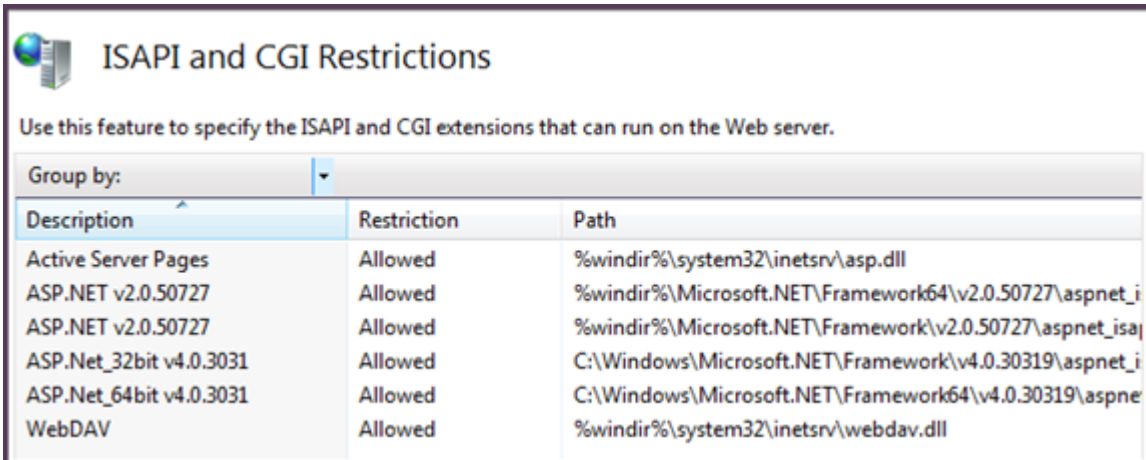
2. Right-click the **RequiresAuthentication.xml** file and select **Switch to Features View**.
3. Right-click **Authentication** and select **Open Feature**.
4. Right-click **Anonymous Authentication** and select **Disable**.



5. Right-click **Windows Authentication** and select **Enable**.
6. On the web server, double-click **ISAPI and CGI restrictions**.



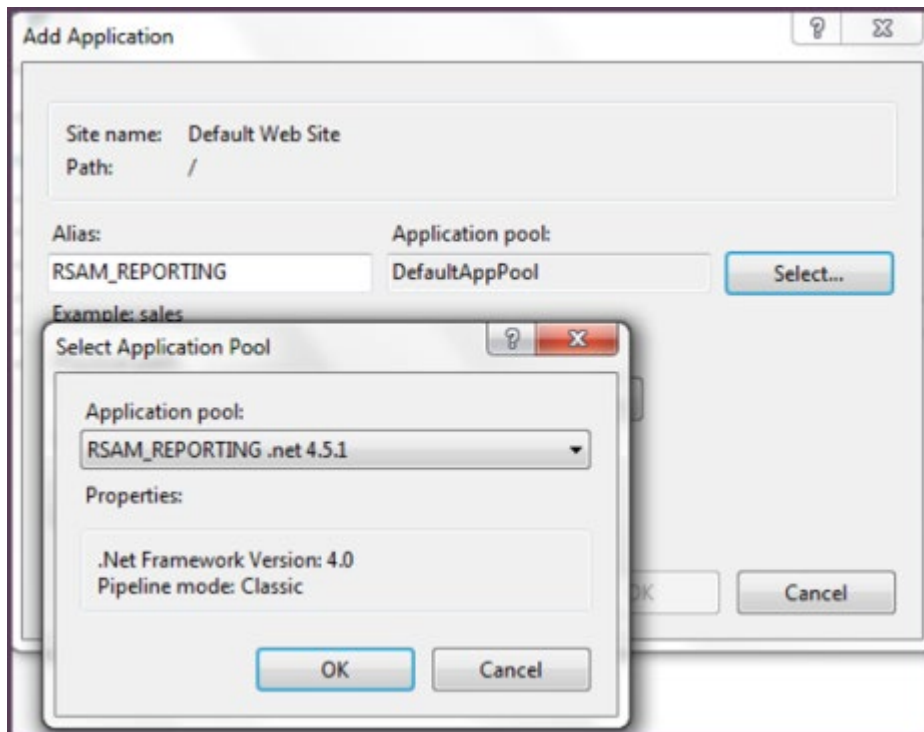
7. Check and set all **ASP.net v4.0.x** to **Allowed**.



## Setting up Rsam Virtual Directory for Web Reporting

To set up an Rsam Virtual Directory for Web Reporting, perform the following steps:

1. Expand your server instance and double-click **Sites**.
2. Create the RSAM\_Reporting virtual directory as follows:
  - a. On the left panel, right-click **RSAM\_REPORTING** folder and select **Convert to Application**.
  - b. In the **Add Application** dialog box, click **Select** and choose **RSAM\_Reporting**.



- c. Click **OK** in the dialog boxes to save the configuration.



## Setting up Rsam Virtual Directory for Web Admin

To set up Rsam Virtual Directory for Web Admin, perform the following steps:

1. Expand your server instance and double click **Sites**.
2. Create the Rsam Administration virtual directory as follows:
  - a. On the left panel, right-click **RSAM\_WebAdmin** folder and select **Convert to Application**.
  - b. In the **Add Application** dialog box, click **Select** and choose **RSAM**.
  - c. Click **OK** in the dialog boxes to save the configuration.

## Set Permissions for the SSRS\_Temp folder

1. Navigate to the RSAM Main folder (X:\inetpub\wwwroot\RSAM\_WebAdmin) and double-click it to list the sub-directories.
2. Right-click **SSRS\_Temp** folder to open the **Properties** dialog box.
3. In the **Security** tab, click **Add**.
4. Type *servername* | **Network Service** (where *servername* is the actual name of the server this is installed on).
5. Click **OK**.
6. Select **Network Service**, select **Allow for Full Control** and click **OK**.

## Setting up Rsam Virtual Directory for Findings

If you want to use the **Rsam Findings** module, you must create a separate virtual directory for it.

Perform the following steps to create the Virtual Directory for Rsam Findings:

1. Open IIS Manager.
2. Expand your server instance and double-click **Sites**.
3. Create the Rsam Findings virtual directory as follows:
  - a. On the left the panel, right-click **RSAM\_Findings** and choose **Convert to Application**.
  - b. In the **Add Application** dialog box, click **Select** and choose **RSAM**.
  - c. Click **OK** in the dialog boxes to save the configuration.

## Setting up Permissions for the Temp folder

1. Navigate to the **RSAM Findings** folder (X:\inetpub\wwwroot\RSAM\_FINDINGS) and double-click it to list the sub-directories.
2. Right-click **Temp** folder to open the **Properties** dialog box.
3. In the **Security** tab, click **Add**.

4. Type **servername\Network Service** (where *servername* is the actual name of the server this is installed on).
5. Click **OK**.
6. Select **Network Service**, select **Allow for Full Control** and click **OK**.

## Setting up Rsam Virtual Directory for SSO

**Note:** The Single Sign On feature should be configured only if you intend to use the functionality.

1. Open IIS Manager.
2. Expand your server instance and double-click **Sites**.
3. Create the Rsam SSO virtual directory as follows:
  - a. On the left the panel, right-click **RSAM\_SSO** and choose **Convert to Application**.
  - b. In the **Add Application** dialog box, click **Select** and choose **RSAM**.
  - c. Click **OK** in the dialog boxes to save the configuration.

## Configuring Directory Security

1. In IIS Manager, navigate to **Sites > Default Web Site**. Select the **RSAM\_SSO** virtual directory, and then click **Open Feature**.
2. Right-click **Anonymous Authentication** and select **Disable**.
3. Right-click **Windows Authentication** and select **Enable**.

## Setting up Rsam Virtual Directory for Permissions

1. Expand your server instance and double-click **Sites**.
2. Create the Rsam Permissions virtual directory as follows:
  - a. On the left the panel, right-click **RSAM\_Permissions** and choose **Convert to Application**.
  - b. In the **Add Application** dialog box, click **Select** and choose **RSAM**.
  - c. Click **OK** in the dialog boxes to save the configuration.

## Setting up Rsam Scheduler Service

**Note:** Start this section only after completing Rsam Administration setup in the previous sections.

### Configuration on the Web Server

1. Navigate to the Rsam Scheduler Service folder.
2. Right-click **INSTALL\_SCHEDULER.BAT** and select **Run as Administrator** to start installing the Rsam Scheduler service.
3. Open Windows services and make sure that **Rsam Scheduler** service is installed and running.

## Enabling Assessment Questionnaire

### Importing the migration file

To import the migration xml file, perform the following steps:

1. Log in to Rsam as *Administrator*.
2. Navigate to **Manage > Administration > Environment Migration > Import**.
3. Click **Browse** to locate the **MigrationFileName.xml** script file and click **Import**.

On successfully importing the xml file, corresponding data is migrated to the database for that Rsam instance.



Summary Log: [View Import Summary Log Details](#)

Table Name	Total Records	ADDED	UPDATED	DELETED	SKIPPED
ATTRIBUTE	15	-	15	-	-
ATTRIBUTETYPE	52	-	52	-	-
ATTRIBUTETYPE_ID	-	-	-	-	-
ATTRIBUTETYPE_IN	-	-	-	-	-
FL_CATEGORICTYPE	5	-	5	-	-
FL_FINDINGTYPE	5	-	5	-	-
FL_FINDINGTYPE_	1283	-	1283	-	-
FL_FINDINGTYPE_	205	205	1	205	-
FL_FINDINGTYPE_	5	-	5	-	-
FL_FINDINGTYPE_	2	-	2	-	-

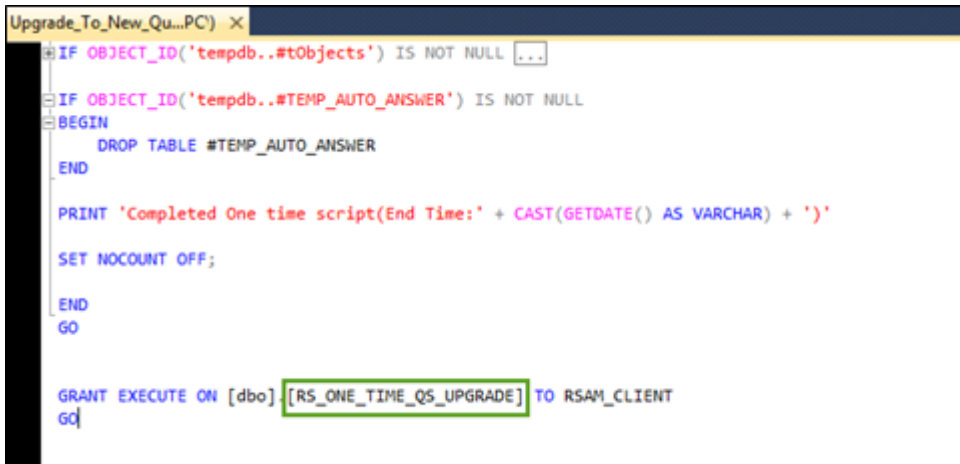
Records per page: 75 Page 1 of 1

Note: To filter records, please enter 0 in the filter box.

## Running Store Procedure and Script files

To run the store procedure and script files, perform the following steps:

1. Obtain the **Upgrade\_To\_New\_Questionnaire.sql** and run the database script file.
2. Execute the **RS\_ONE\_TIME\_QS\_UPGRADE** stored procedure.



```
Upgrade_To_New_Qu...PC) x
IF OBJECT_ID('tempdb..#tObjects') IS NOT NULL ...
IF OBJECT_ID('tempdb..#TEMP_AUTO_ANSWER') IS NOT NULL
BEGIN
    DROP TABLE #TEMP_AUTO_ANSWER
END
PRINT 'Completed One time script(End Time:' + CAST(GETDATE() AS VARCHAR) + ')'
SET NOCOUNT OFF;
END
GO

GRANT EXECUTE ON [dbo].[RS_ONE_TIME_QS_UPGRADE] TO RSAM_CLIENT
GO
```

**Note:** Running the Store Procedure will take substantial amount of time depending on the volume of data.

# Install Microsoft Access Database Engine

---

If you plan to import Excel 2007 files or later, install either the **Office 2010 32-bit** or **64-bit** driver, depending on whether the web server is 32-bit or 64-bit:

## **If web server is a 32-bit system**

<http://download.microsoft.com/download/2/4/3/24375141-E08D-4803-AB0E-10F2E3A07AAA/AccessDatabaseEngine.exe> - Office 2010 32-bit drivers

## **If web server is a 64-bit system**

[http://download.microsoft.com/download/2/4/3/24375141-E08D-4803-AB0E-10F2E3A07AAA/AccessDatabaseEngine\\_X64.exe](http://download.microsoft.com/download/2/4/3/24375141-E08D-4803-AB0E-10F2E3A07AAA/AccessDatabaseEngine_X64.exe) - Office 2010 64-bit drivers (use if Web server is a 64-bit machine)

**Note:** In case the above links do not work, you can visit [www.microsoft.com](http://www.microsoft.com) and search for **Microsoft Access Database Engine 2010 Redistributable** to find a download link.

Click **Download** and then install the file on the Web Server.

# Reports

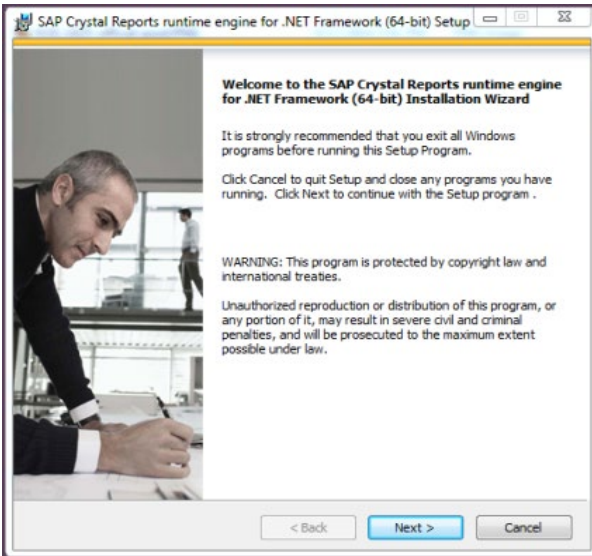
---

The following section explains the steps to configure the Reports module in Rsam.

## Install Crystal Reports 2013

To install Crystal Reports 2013, perform the following steps:

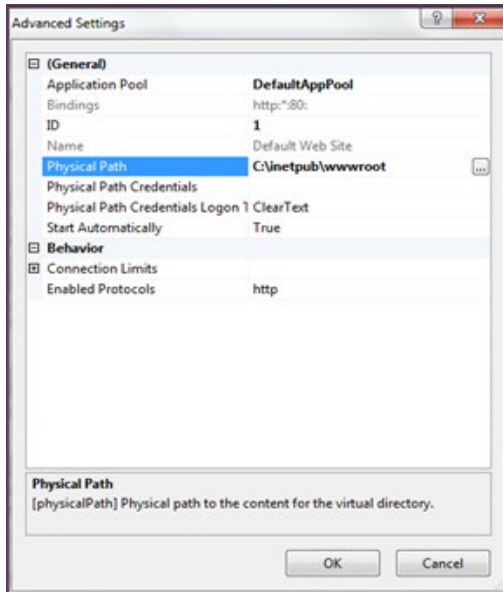
1. Run the Crystal Reports MSI Package (CRRuntime\_64bit\_13\_0\_20.msi and later versions) on the FTP link.



2. Copy the sub folder **crystalreportviewers13** to root of WebSite that Rsam is installed, if not available by default.

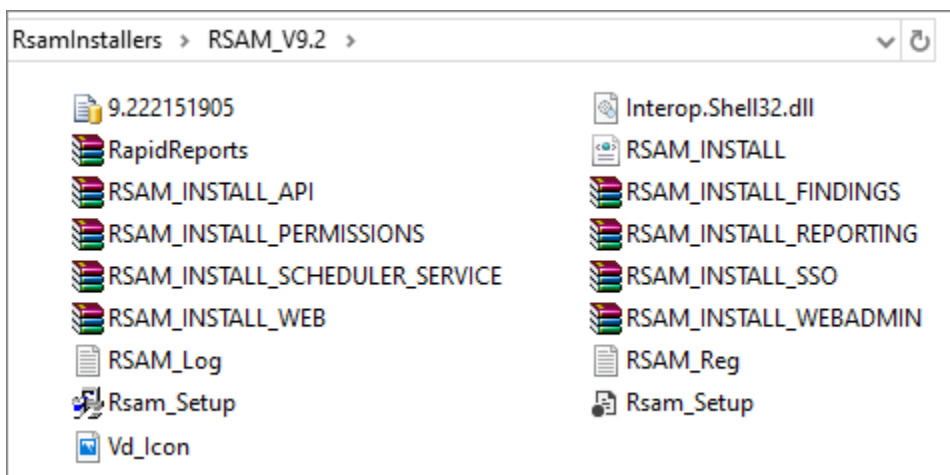
By default, the Crystal MSI package installs the **aspnet\_client** folder in the root location of the WebSite that hosts Rsam (*C:\inetpub\wwwroot*). If the root location of the WebSite that hosts Rsam is not *C:\inetpub\wwwroot*, then you must copy the **aspnet\_client** folder to the corresponding location.

To determine the root of the WebSite where *RSAM\_REPORTING* virtual directory is, right-click **Default Web Site** and select **Manage Web Site > Advanced Settings**. Note the value set for **Physical Path**.



## Enabling Rapid Reports

To enable Rapid Reports in your Rsam instance, use the RDL files available in the **RapidReports.zip**.



## Configurations in Rsam

---

This section explains the configurations to be done in Rsam after the installation is successful.

### Rsam Option for Data Import

If the Scheduler service is installed on a system other than the Web Server, log in to Rsam and navigate to **Manage > Administration > Options > RSAM Options** and select **Data Import Options** in the **Option Categories** drop down list and specify the path in the **Path to temporary store uploaded files during import** field.

### Setting up Rsam Web URLs

To set up the Web URLs in Rsam, perform the following steps:

1. Log in to Rsam as an *Administrator*.
  - a. Navigate to **Manage > Administration > Options > RSAM Options** and select **URL Links** in the **Option Categories** drop down list.
  - b. Provide the URL links for the specific Rsam Web components configured in your environment, on the web server.
  - c. Click **Save Options**.
2. Log in to Rsam as an Account Administrator (or higher) account.
  - a. Navigate to **Manage > Users/Groups**.
  - b. Check if there is already an account **Scheduler**. Else, add an account and set the **User Privilege** to **Data Admin** and clear the **Force User to change password on next login** check box.
  - c. Navigate to **Manage > Administration > Options > RSAM Options** and select **Scheduler** in the **Option Categories** drop down list.
  - d. Enter a number (in seconds) for **Timer Interval** (default value is 20).
  - e. Type the account (Rsam user ID) which will be used to schedule tasks in the **User ID for scheduled task** field. By default, the account name should be set to **Scheduler**.
  - f. Select the **Enable Scheduler** check box.
  - g. Click **Save Options**.